

# Schlüter®-SYSTEMS

## Supplementary Price List Spring 2018

Export · Effective from 1 April 2018



# 2018

## Fine attention to detail – Schlüter®-FINEC

Less is more. True to this motto, Schlüter®-FINEC is an elegant, slim corner formation for perfect wall design. Schlüter®-FINEC combines high material quality with minimalist design. Available in:

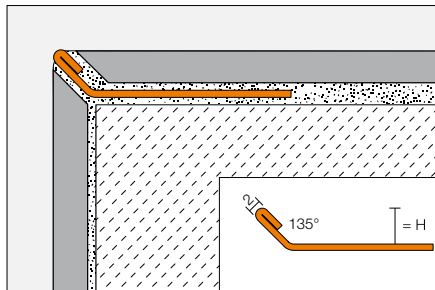
- ✓ stainless steel
- ✓ anodised aluminium
- ✓ aluminium textured coating
- ✓ colour coated aluminium



### Schlüter®-FINEC-E

**Schlüter®-FINEC-E** is a high-quality finishing profile made of stainless steel for the external edges of tile coverings, mosaics or rendered surfaces. The finishing leg of the profile protects the covering edges from mechanical damage and creates an elegant, slim corner detail. Schlüter®-FINEC-E made of stainless steel is also suitable for use in staircases as a slim edge protection for tiles and coating systems.

(Product data sheet 2.17)



<b>Schlüter®-FINEC-E</b>			
stainless steel V2A			
H = mm	L = 2.50 m Art.-No.	€/ m	KV = Unit
4.5	F 45 E	8.25	120
7	F 70 E	9.75	120
▲ 9	F 90 E	10.20	120
▲ 11	F 110 E	10.85	120
▲ 12.5	F 125 E	11.20	120

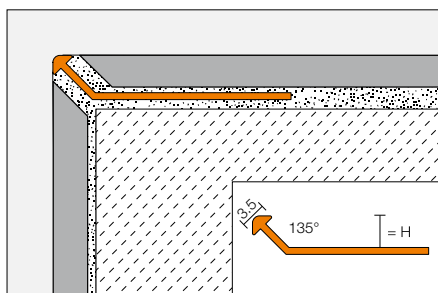




## Schlüter®-FINEC-TS

**Schlüter®-FINEC-TS** is a high-quality finishing profile made of anodised aluminium with a special coating structure and texture for the external edges of tile coverings, mosaics or rendered surfaces. The finishing leg of the profile protects the covering edges from mechanical damage and creates an elegant, slim corner detail.

(Product data sheet 2.17)



<b>Schlüter®-FINEC-TSI</b> ▲			
aluminium, textured natural ivory			
H = mm	L = 2.50 m Art.-No.	€/m	KV = Unit
4.5	F 45 TSI	11.60	120
7	F 70 TSI	12.45	120
9	F 90 TSI	12.65	120
11	F 110 TSI	13.45	120
12.5	F 125 TSI	14.05	120

<b>Schlüter®-FINEC-TSC</b> ▲			
aluminium, textured natural cream			
H = mm	L = 2.50 m Art.-No.	€/m	KV = Unit
4.5	F 45 TSC	11.60	120
7	F 70 TSC	12.45	120
9	F 90 TSC	12.65	120
11	F 110 TSC	13.45	120
12.5	F 125 TSC	14.05	120

<b>Schlüter®-FINEC-TSBG</b> ▲			
aluminium, textured natural beige grey			
H = mm	L = 2.50 m Art.-No.	€/m	KV = Unit
4.5	F 45 TSBG	11.60	120
7	F 70 TSBG	12.45	120
9	F 90 TSBG	12.65	120
11	F 110 TSBG	13.45	120
12.5	F 125 TSBG	14.05	120

<b>Schlüter®-FINEC-TSB</b> ▲			
aluminium, textured natural beige			
H = mm	L = 2.50 m Art.-No.	€/m	KV = Unit
4.5	F 45 TSB	11.60	120
7	F 70 TSB	12.45	120
9	F 90 TSB	12.65	120
11	F 110 TSB	13.45	120
12.5	F 125 TSB	14.05	120

<b>Schlüter®-FINEC-TSSG</b> ▲			
aluminium, textured natural stone grey			
H = mm	L = 2.50 m Art.-No.	€/m	KV = Unit
4.5	F 45 TSSG	11.60	120
7	F 70 TSSG	12.45	120
9	F 90 TSSG	12.65	120
11	F 110 TSSG	13.45	120
12.5	F 125 TSSG	14.05	120

<b>Schlüter®-FINEC-TSG</b> ▲			
aluminium, textured natural grey			
H = mm	L = 2.50 m Art.-No.	€/m	KV = Unit
4.5	F 45 TSG	11.60	120
7	F 70 TSG	12.45	120
9	F 90 TSG	12.65	120
11	F 110 TSG	13.45	120
12.5	F 125 TSG	14.05	120

<b>Schlüter®-FINEC-TSOB</b> ▲			
aluminium, textured natural bronze			
H = mm	L = 2.50 m Art.-No.	€/m	KV = Unit
4.5	F 45 TSOB	11.60	120
7	F 70 TSOB	12.45	120
9	F 90 TSOB	12.65	120
11	F 110 TSOB	13.45	120
12.5	F 125 TSOB	14.05	120

<b>Schlüter®-FINEC-TSLA</b> ▲			
aluminium, textured natural light anthracite			
H = mm	L = 2.50 m Art.-No.	€/m	KV = Unit
4.5	F 45 TSLA	11.60	120
7	F 70 TSLA	12.45	120
9	F 90 TSLA	12.65	120
11	F 110 TSLA	13.45	120
12.5	F 125 TSLA	14.05	120

<b>Schlüter®-FINEC-TSDA</b> ▲			
aluminium, textured natural dark graphite			
H = mm	L = 2.50 m Art.-No.	€/m	KV = Unit
4.5	F 45 TSDA	11.60	120
7	F 70 TSDA	12.45	120
9	F 90 TSDA	12.65	120
11	F 110 TSDA	13.45	120
12.5	F 125 TSDA	14.05	120

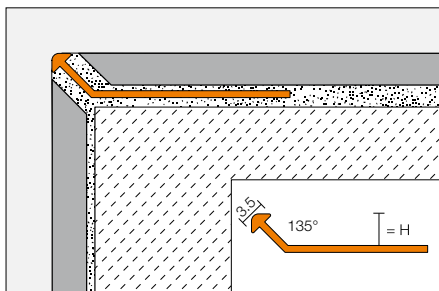
<b>Schlüter®-FINEC-TSR</b> ▲			
aluminium, textured natural rustic brown			
H = mm	L = 2.50 m Art.-No.	€/m	KV = Unit
4.5	F 45 TSR	11.60	120
7	F 70 TSR	12.45	120
9	F 90 TSR	12.65	120
11	F 110 TSR	13.45	120
12.5	F 125 TSR	14.05	120



### Schlüter®-FINEC-A

Schlüter®-FINEC-A is a high-quality finishing profile made of anodised or colour coated aluminium for the external edges of tile coverings, mosaics or rendered surfaces. The finishing leg of the profile protects the covering edges from mechanical damage and creates an elegant, slim corner detail.



(Product data sheet 2.17)



Schlüter®-FINEC-AE			
anodised aluminium			
H = mm	L = 2.50 m Art.-No.	€ / m	KV = Unit
2.5	F 25 AE	5.15	120
4.5	F 45 AE	5.20	120
7	F 70 AE	5.45	120
▲ 9	F 90 AE	5.75	120
▲ 11	F 110 AE	6.20	120
▲ 12.5	F 125 AE	6.40	120

Schlüter®-FINEC-AC			
colour coated aluminium			
H = mm	L = 2.50 m Art.-No.	€ / m	KV = Unit
2.5	F 25 ...*	5.55	120
4.5	F 45 ...**	5.75	120
7	F 70 ...**	6.05	120
9	F 90 ...**	6.15	120
11	F 110 ...**	6.25	120
12.5	F 125 ...**	6.45	120



To complete the Art.-No., add the colour (e.g. F 45 MBW)
 
* Colours: MBW
** Colours: MBW – MGS



### Schlüter®-DITRA-HEAT-E-R-WIFI

**Schlüter®-DITRA-HEAT-E-R-WIFI** is a smart thermostat for full control of the electrical heating of floor and wall coverings with Schlüter®-DITRA-HEAT-E. It can be operated via the 2" (5,1 cm) touchscreen display or remotely using a smartphone or tablet with the dedicated Schlüter®-HEAT-CONTROL app. The smart thermostat can either be used exclusively to set the covering temperature or for temperature control with room air adjustment. A spare sensor is included in the scope of supply.

(Product data sheet 6.4)

Schlüter®-DITRA-HEAT-E-R-WIFI ▲		
smart Wi-Fi touchscreen thermostat (230V) with two remote sensors		
Art.-No.	€ / Set	P = Set
DH E RT 5 / BW	245.50	10



Available from June 2018

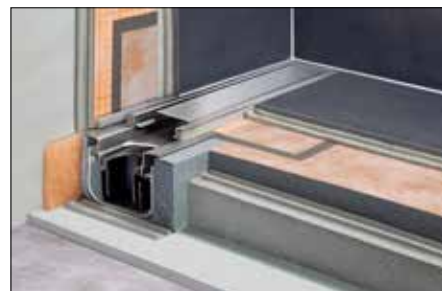
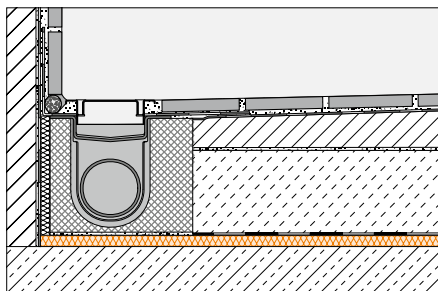
### Sound insulation



### Schlüter®-KERDI-LINE-SR

**Schlüter®-KERDI-LINE-SR** is an insulating membrane made of a special fleece fabric with noise-reducing properties. When properly installed, assemblies with Schlüter®-KERDI-LINE and Schlüter®-KERDI-LINE-SR meet the requirements of DIN 4109 standards to comply with noise insulation in shower areas.

(Product data sheet 8.7)



**Note:**

Please refer to our planning materials for system assemblies.

Schlüter®-KERDI-LINE-SR ▲			
PES fleece membrane (contains: 1 membrane)			
shelf depth in mm	Art.-No.	€ / U.	P = Unit
10	KL SR 250	17.75	5

Schlüter®-KERDI-LINE-SR ▲			
PES fleece membrane (contains: 4 membranes)			
shelf depth in mm	Art.-No.	€ / Set	P = Set
10	KL SR 1000	59.80	5

Dimensions of individual mats: 0.5 m x 0.5 m = 0.25 m<sup>2</sup>

Schlüter®-DITRA-SOUND-KB		
joint covering strip		
38 mm x 50 m Art.-No.	€ / U.	P = Unit
DS KB 38	12.43	10



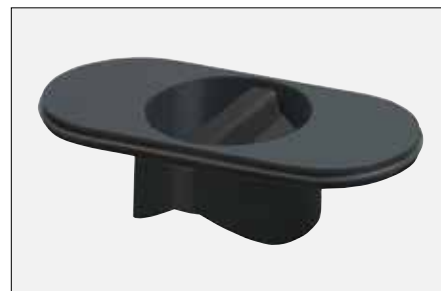


### Schlüter®-KERDI-LINE-GTO

**Schlüter®-KERDI-LINE-GTO** is a waterless odour trap. It can easily replace the wet trap in our linear drains, being intended for situations when infrequent use of the drain could result in the water in a wet trap evaporating. With a drain capacity of at least 0,4 l/s, it can also permanently replace the standard odour trap unit.

(Product data sheet 8.7)

Schlüter®-KERDI-LINE-GTO 		
dry odour trap		
Art.-No.	€ / U.	P = Unit
KL GTO	25.00	10




**Note:**

Not suitable for Schlüter®-KERDI-LINE-F/-VS/-VOS.

### Schlüter®-KERDI-DRAIN-R 10 GT

**Schlüter®-KERDI-DRAIN-R10 GT** is a waterless odour trap for use with all 10 x 10 cm grate/frame sets. It can easily replace the wet trap in our point drains, being intended for situations when infrequent use of the drain could result in the water in a wet trap evaporating. With a drain capacity of at least 0,4 l/s, it can also permanently replace the standard odour trap unit.

(Product data sheet 8.2)

Schlüter®-KERDI-DRAIN-R 10 GT 		
dry odour trap		
Art.-No.	€ / U.	P = Unit
KD R10 GT	27.00	10

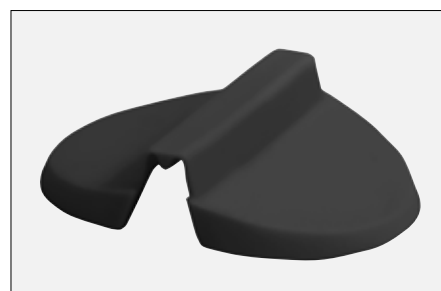


### Schlüter®-KERDI-LINE-GTM

**Schlüter®-KERDI-LINE-GTM** is a replacement odour seal for use with Schlüter®-KERDI-DRAIN-R10 GT and Schlüter®-KERDI-LINE-GTO.

(Product data sheet 8.7)

Schlüter®-KERDI-LINE-GTM 		
replacement dry trap door		
Art.-No.	€ / U.	P = Unit
KL GTM	13.50	10





## Delivery and Payment Conditions

### 1. General

By placing his order, the purchaser agrees to the following delivery and payment conditions. These conditions shall remain in effect throughout the business relationship unless expressly altered in writing.

We reject all delivery and payment conditions of purchasers that differ from our own. Individual differing purchase conditions shall only be binding if we confirm them in writing.

### 2. Offers and prices

Unless expressly agreed to the contrary, all offers are understood to be non-binding and subject to change without notice. For all deliveries, the sales price shall be the current price in effect on the day of delivery. The most recently published price list shall supersede all others. Unless otherwise specified, prices are quoted without VAT.

### 3. Delivery, acceptance, place of performance

For all orders, shipment shall be made at the expense and risk of the purchaser from either the production plant or our warehouse, even in the event of pre-paid freight delivery. We shall not be held liable for damage incurred during shipping or at the final destination. Purchasers shall claim any damage or losses from the shipping company prior to accepting a shipment. Delivery possibility is reserved for all orders. Delayed deliveries shall entitle the purchaser to rescind an order, but shall not represent an entitlement to damages. We accept no liability for timely delivery.

### 4. Warranty

Complaints concerning defects must be lodged immediately after receipt of the goods and before the installation of any products. Cancellation or reduction may be demanded, but the customer shall be entitled to no other claims of any kind as a result of defective delivery. The place of performance shall be, even for pre-paid delivery, the loading dock in Iserlohn.

For sales according to sample, it shall be warranted only that merchandise shall conform to the sample characteristics. We expressly refer the purchaser to the information in our most current brochures and technical data sheets for product installation. No warranty is made of suitability for any specific application. Advice and instructions for use are given in good faith on the basis of experience and testing, and in accordance with the best of our knowledge, but no liability on our part may be derived therefrom, unless the defectiveness of the delivered product entitles the purchaser to claim warranty or liability payments required by law. Depending on the individual installation situation, users of the product shall be responsible for conducting their own professionally qualified assessment of the product prior to any use of the product to verify it is free of defects and usable. In cases of installing products that do not comply with the state of the art, e.g., due to their novelty, the customer (installer) shall be responsible for making the appropriate arrangements with the property developer.

### 5. Payment

Invoice amount must be paid in Euros by the Payment Due Date. Rebates and discounts are granted by special arrangement only. Cash discounts on new invoices are not applicable until all due invoices are paid. In the event of payment in arrears, we shall be entitled to claim interest on the payable amount at an amount by 5% higher than the basic interest rate (§247(1), German Civil Code) p.a., starting from the first day of arrears and without additional notification. Acceptance, bills of exchange or cheques taken in payment shall be considered as such only after they have been honoured. Nonconformity to payment terms, or other credit-limiting factors that become apparent after entering the contract agreement, will cause all outstanding invoices to become due immediately and allow us to cancel the contract.

Deliveries to customers who are not known to us, or in the case of small orders, or for any other reason which appears necessary to us, may be sent by us cash on delivery, or (in the event of pick up) cash payment may be demanded upon pick up.

### 6. Retention of title

The merchandise shall remain our property until all of our claims arising from the business relationship with the purchaser shall be fully paid. The purchaser shall be obliged to notify us of any actions by third parties affecting the delivered merchandise which is under retention of title.

If the delivered merchandise or objects produced from their further processing are resold by the purchaser or installed in a real estate property belonging to a third party, in such a way that they become essential components of that third party's property, then all claims and ancillary rights arising from the seller from such sale or installation vis-à-vis this buyer or third parties shall be assigned to us.

A special declaration of assignment shall not be required. Rights arising from the retention of title shall remain in effect until the complete release from all contingent liabilities which the seller/deliverer has undertaken in the interest of the purchaser/buyer.

### 7. Variations

Changes with respect to the preceding conditions shall be effective only if agreed to in writing. Verbal or agreements shall be valid only if they are confirmed in writing. Conflicting conditions of the purchaser cannot be recognized. Should individual provisions of these delivery and payment conditions be found contrary to binding law, the legal validity of the remaining provisions shall not be affected.

### 8. Jurisdiction and final note

The place of jurisdiction shall be Iserlohn or Hagen, including in matters involving bills of exchange or checks, if the purchaser is a registered merchant or if the remaining conditions of § 38, Code of Civil Procedure, apply. All disputes arising from this agreement shall exclusively be subject to the law of the Federal Republic of Germany, exactly as it is applicable to domestic business transactions between domestic parties. The invalidity of individual provisions of these delivery and payment conditions shall not affect the remaining provisions.



[www.schlueter-systems.com](http://www.schlueter-systems.com)



Subject to the Standard Terms and Conditions of Sale of Schlüter-Systems KG.  
Errors, changes, and printing mistakes as well as changes necessary in the interest of product innovation or shipping reserved. For reasons of printing, colours shown in this price list may differ from actual product colours.



P R O F I L E   O F   I N N O V A T I O N

**Schlüter-Systems KG** · Schmölestraße 7 · D-58640 Iserlohn  
Tel.: +49 2371 971-0 · Fax: +49 2371 971-111 · [info@schlueter.de](mailto:info@schlueter.de) · [www.schlueter-systems.com](http://www.schlueter-systems.com)